



# CAMPOVERDE CATALOG

**ACAI, FRUIT & VEGGIE BLENDERS, BULK FRUIT, AMARILLOS, TOSTONES**



**CROSS INTERNATIONAL**  
BROKERAGE Inc.

# CAMPOVERDE JUMBO STRAWBERRIES 6/3 lb.



## Nutrition Facts

About 16 servings per container  
**Serving size 5 pieces (144g)**

**Amount per serving**  
**Calories 45**

	% Daily Value*
<b>Total Fat</b> 0g	<b>0%</b>
Saturated Fat 0g	<b>0%</b>
Trans Fat 0g	
<b>Cholesterol</b> 0mg	<b>0%</b>
<b>Sodium</b> 0mg	<b>0%</b>
<b>Total Carbohydrate</b> 11g	<b>4%</b>
Dietary Fiber 3g	<b>11%</b>
Total Sugars 7g	
Includes 0g Added Sugars	<b>0%</b>
<b>Protein</b> <1g	
Vitamin D 0mcg	<b>0%</b>
Calcium 23mg	<b>0%</b>
Iron 1mg	<b>4%</b>
Potassium 220mg	<b>4%</b>
Vitamin C 85mg	<b>90%</b>
Manganese 1mg	<b>25%</b>
Molybdenum 19mcg	<b>45%</b>

\* The % Daily Value (DV) tells you how much a nutrient in a serving of food contributes to a daily diet. 2,000 calories a day is used for general nutrition advice.



MCC Code	190-0101
Pack	6/3#
Unit UPC	0-52525-40409-2
Pack UPC	1-00-52525-40409-9
Pack	6
Item weight	3#
Case Gross WT	19.5#
Shelf Life	730 days (2 years)

Case Dimensions	
Length	14.5
Width	11.5
Height	9.25
Cube	0.89
Ti	11
Hi	4
Pallet	44

Ingredients: Jumbo Strawberries

Product of Peru, Mexico or Chile





# CAMPOVERDE MOONLIGHT SERENADE 6/3 lb.



<b>Nutrition Facts</b>	
Serving Size 2/3 Cup (140g)	
Servings per Container Approx. 10	
Amount Per Serving	
<b>Calories</b> 60	Calories from Fat 0
<b>% Daily Value*</b>	
<b>Total Fat</b> 0g	<b>0%</b>
<b>Saturated Fat</b> 0g	<b>0%</b>
<b>Trans Fat</b> 0g	
<b>Cholesterol</b> 0mg	<b>0%</b>
<b>Sodium</b> 1mg	<b>0%</b>
<b>Total Carbohydrate</b> 9g	<b>3%</b>
Dietary Fiber 7g	<b>28%</b>
Sugars 10g	
<b>Protein</b> 1g	
Vitamin A 2%	Vitamin C 24%
Calcium 2%	Iron 0%

\* Percent Daily Values are based on a 2,000 calorie diet. Your daily values may be higher or lower depending on your calorie needs:

	Calories: 2,000	2,500
Total Fat	Less than 65g	80g
Saturated Fat	Less than 20g	25g
Cholesterol	Less than 300mg	300mg
Sodium	Less than 2,400mg	2,400mg
Total Carbohydrate	300g	375g
Dietary Fiber	25g	30g

Calories per gram: Fat 9 • Carbohydrate 4 • Protein 4



MCC Code	190-0037
Pack	6/3#
Unit UPC	0-52525-07036-5
Pack UPC	1-00-52525-07036-2
Pack	6
Item weight	3#
Case Gross WT	19.5#
Shelf Life	730 days (2 years)

<u>Case Dimensions</u>	
Length	15.5
Width	11
Height	10
Cube	1.05
Ti	10
Hi	3
Pallet	30

Ingredients:  
Blueberries

Product of Chile



# CAMPOVERDE PINEAPPLE CHUNKS 6/3 lb.



## Nutrition Facts

About 6 servings per container  
**Serving size 1 cup (227g)**

**Amount per serving**  
**Calories 110**

**% Daily Value\***

<b>Total Fat</b> 0g	<b>0%</b>
Saturated Fat 0g	<b>0%</b>
Trans Fat 0g	
<b>Cholesterol</b> 0mg	<b>0%</b>
<b>Sodium</b> 0mg	<b>0%</b>
<b>Total Carbohydrate</b> 30g	<b>11%</b>
Dietary Fiber 3g	<b>11%</b>
Total Sugars 22g	
Includes 0g Added Sugars	<b>0%</b>
<b>Protein</b> 1g	
Vitamin D 0mcg	<b>0%</b>
Calcium 30mg	<b>2%</b>
Iron 1mg	<b>5%</b>
Potassium 247mg	<b>6%</b>
Vitamin C 109mg	<b>120%</b>
Managanese 2mg	<b>90%</b>

\* The % Daily Value (DV) tells you how much a nutrient in a serving of food contributes to a daily diet. 2,000 calories a day is used for general nutrition advice.



MCC Code	190-0110
Pack	6/3#
Unit UPC	0-52525-40412-2
Pack UPC	1-00-52525-40412-9
Pack	6
Item weight	3#
Case Gross WT	19.5#
Shelf Life	730 days (2 years)



Case Dimensions	
Length	14.5
Width	11.5
Height	8.5
Cube	0.82
Ti	11
Hi	4
Pallet	44

Ingredients:  
 Pineapple Chunks  
 Product of Costa Rica





# CAMPOVERDE MANGO CHUNKS 6/3 lb.



## Nutrition Facts

About 6 servings per container  
**Serving size 1 cup (227g)**

**Amount per serving**  
**Calories 140**

**% Daily Value\***

<b>Total Fat</b> 1g	<b>1%</b>
Saturated Fat 0g	<b>0%</b>
Trans Fat 0g	
<b>Cholesterol</b> 0mg	<b>0%</b>
<b>Sodium</b> 0mg	<b>0%</b>
<b>Total Carbohydrate</b> 34g	<b>12%</b>
Dietary Fiber 4g	<b>14%</b>
<b>Total Sugars</b> 31g	
Includes 0g Added Sugars	<b>0%</b>

### Protein 2g

Vitamin D 0mcg	<b>0%</b>
Calcium 25mg	<b>0%</b>
<b>Iron</b> 0mg	<b>0%</b>
Potassium 381mg	<b>8%</b>
Vitamin A 123mcg	<b>15%</b>
Vitamin C 83mg	<b>90%</b>
Niacin 2mg	<b>15%</b>
Vitamin E 2mg	<b>15%</b>

\* The % Daily Value (DV) tells you how much a nutrient in a serving of food contributes to a daily diet. 2,000 calories a day is used for general nutrition advice.



MCC Code	190-0108
Pack	6/3#
Unit UPC	0-52525-40413-9
Pack UPC	1-00-52525-40413-6
Pack	6
Item weight	3#
Case Gross WT	19.5#
Shelf Life	730 days (2 years)

<u>Case Dimensions</u>	
Length	14.5
Width	11.5
Height	8.5
Cube	0.82
Ti	11
Hi	4
Pallet	44

Ingredients:  
Mango Chunks

Product of Peru  
or Mexico



# CAMPOVERDE PAPAYA HEALTHY TREAT 6/3 lb.



## Nutrition Facts

About 6 servings per container  
**Serving size 1 cup (227g)**

**Amount per serving**  
**Calories 100**

		% Daily Value*
<b>Total Fat</b>	0.5g	1%
Saturated Fat	0g	0%
Trans Fat	0g	
<b>Cholesterol</b>	0mg	0%
<b>Sodium</b>	0mg	0%
<b>Total Carbohydrate</b>	24g	9%
Dietary Fiber	4g	14%
<b>Total Sugars</b>	19g	
Includes 0g Added Sugars		0%

Protein 2g		
Vitamin D	0mcg	0%
Calcium	26mg	2%
Iron	1mg	5%
Potassium	383mg	8%
Vitamin C	83mg	90%
Niacin	2mg	10%
Vitamin E	1mg	10%
Molybdenum	12mcg	25%

\* The % Daily Value (DV) tells you how much a nutrient in a serving of food contributes to a daily diet. 2,000 calories a day is used for general nutrition advice.



MCC Code	190-0111
Pack	6/3#
Unit UPC	0-52525-40414-6
Pack UPC	1-00-52525-40414-3
Pack	6
Item weight	3#
Case Gross WT	19.5#
Shelf Life	730 days (2 years)

Case Dimensions		
Length		14.5
Width		11.5
Height		8.5
Cube		0.82
Ti		11
Hi		4
Pallet		44

Ingredients: Papaya  
 Chunks

Product of Costa Rica





# CAMPOVERDE 4 BERRY MIX 6/3 lb.



Nutrition Facts	
Serving Size 3/4 Cup (140g)	
Servings per Container Approx. 8	
Amount Per Serving	
<b>Calories</b> 70	Calories from Fat 0
<b>% Daily Value*</b>	
<b>Total Fat</b> 0.5g	<b>1%</b>
<b>Saturated Fat</b> 0g	<b>0%</b>
<b>Trans Fat</b> 0g	
<b>Cholesterol</b> 0mg	<b>0%</b>
<b>Sodium</b> 1mg	<b>0%</b>
<b>Total Carbohydrate</b> 17g	<b>6%</b>
<b>Dietary Fiber</b> 6g	<b>24%</b>
<b>Sugars</b> 10g	
<b>Protein</b> 1g	
<b>Vitamin A</b> 0%	<b>Vitamin C</b> 50%
<b>Calcium</b> 0%	<b>Iron</b> 6%

\* Percent Daily Values are based on a 2,000 calorie diet. Your daily values may be higher or lower depending on your calorie needs:

	Calories:	2,000	2,500
Total Fat	Less than	65g	80g
Saturated Fat	Less than	20g	25g
Cholesterol	Less than	300mg	300mg
Sodium	Less than	2,400mg	2,400mg
Total Carbohydrate		300g	375g
Dietary Fiber		25g	30g

Calories per gram: Fat 9 • Carbohydrate 4 • Protein 4

**Ingredients:**  
Strawberries,  
Blackberries,  
Blueberries and  
Raspberries

Product of Chile



MCC Code	190-0036
Pack	6/3#
Unit UPC	0-52525-07029-7
Pack UPC	1-00-52525-07029-4
Pack	6
Item weight	3#
Case Gross WT	19.5#
Shelf Life	730 days (2 years)

Case Dimensions	
Length	15.5
Width	11
Height	10
Cube	1.05
Ti	10
Hi	3
Pallet	30

# CAMPOVERDE TROPICAL MIX 6/3 lb.



## Nutrition Facts

About 6 servings per container  
**Serving size 1 cup (227g)**

Amount per serving		% Daily Value*
<b>Calories 120</b>		
<b>Total Fat</b> 0.5g		<b>1%</b>
Saturated Fat 0g		<b>0%</b>
Trans Fat 0g		
<b>Cholesterol</b> 0mg		<b>0%</b>
<b>Sodium</b> 5mg		<b>0%</b>
<b>Total Carbohydrate</b> 31g		<b>11%</b>
Dietary Fiber 3g		<b>11%</b>
Total Sugars 25g		
Includes 0g Added Sugars		<b>0%</b>
<b>Protein</b> 1g		
Vitamin D 0mcg		<b>0%</b>
Calcium 32mg		<b>2%</b>
Iron 1mg		<b>4%</b>
Potassium 359mg		<b>8%</b>
Vitamin C 96mg		<b>110%</b>
Manganese 1mg		<b>30%</b>

\* The % Daily Value (DV) tells you how much a nutrient in a serving of food contributes to a daily diet. 2,000 calories a day is used for general nutrition advice.



MCC Code	190-0109
Pack	6/3#
Unit UPC	0-52525-40411-5
Pack UPC	1-00-52525-40411-2
Pack	6
Item weight	3#
Case Gross WT	19.5#
Shelf Life	730 days (2 years)

Case Dimensions	
Length	14.5
Width	11.5
Height	8.5
Cube	0.82
Ti	11
Hi	4
Pallet	44

Ingredients:  
 Pineapple, Papaya,  
 Mango and Grapes  
 Product of Costa Rica





# CAMPOVERDE GOURMET MIX 6/3 lb.



## Nutrition Facts

6 servings per container  
**Serving size 1 cup (227g)**

**Amount per serving**  
**Calories 100**

	% Daily Value*
<b>Total Fat</b> 0g	<b>0%</b>
<b>Saturated Fat</b> 0g	<b>0%</b>
<b>Trans Fat</b> 0g	
<b>Cholesterol</b> 0mg	<b>0%</b>
<b>Sodium</b> 10mg	<b>0%</b>
<b>Total Carbohydrate</b> 25g	<b>9%</b>
<b>Dietary Fiber</b> 3g	<b>11%</b>
<b>Total Sugars</b> 21g	
<b>Includes 0g Added Sugars</b>	<b>0%</b>

<b>Protein</b> 2g	
Vitamin D	0mcg 0%
Calcium	22mg 0%
Iron	1mg 5%
Potassium	399mg 8%
Vitamin C	56mg 60%
Niacin	1mg 10%
Manganese	1mg 25%
Molybdenum	5mcg 10%

\* The % Daily Value (DV) tells you how much a nutrient in a serving of food contributes to a daily diet. 2,000 calories a day is used for general nutrition advice.

**Ingredients:**  
Peaches, Pineapple,  
Strawberries,  
Honeydew Melon  
and Grapes

Product of Chile



MCC Code	190-0105
Pack	6/3#
Unit UPC	0-52525-40410-8
Pack UPC	1-00-52525-40410-5
Pack	6
Item weight	3#
Case Gross WT	19.5#
Shelf Life	730 days (2 years)

<u>Case Dimensions</u>	
Length	14.5
Width	11.5
Height	8.5
Cube	0.82
Ti	11
Hi	4
Pallet	44



# CAMPOVERDE MANGO MAMBO 6/3 lb.



## Nutrition Facts

6 servings per container  
**Serving size 1 cup (227g)**

**Amount per serving**  
**Calories 120**

**% Daily Value\***

<b>Total Fat</b> 1g	<b>1%</b>
Saturated Fat 0g	<b>0%</b>
Trans Fat 0g	
<b>Cholesterol</b> 0mg	<b>0%</b>
<b>Sodium</b> 0mg	<b>0%</b>
<b>Total Carbohydrate</b> 30g	<b>11%</b>
Dietary Fiber 4g	<b>14%</b>
Total Sugars 25g	
Includes 0g Added Sugars	<b>0%</b>
<b>Protein</b> 2g	
Vitamin D 0mcg	<b>0%</b>
Calcium 24mg	<b>0%</b>
Iron 1mg	<b>5%</b>
Potassium 313mg	<b>6%</b>
Vitamin C 75mg	<b>80%</b>
Niacin 2mg	<b>10%</b>
Vitamin E 2mg	<b>10%</b>
Vitamin K 19mcg	<b>15%</b>
Molybdenum 6mcg	<b>15%</b>

\* The % Daily Value (DV) tells you how much a nutrient in a serving of food contributes to a daily diet. 2,000 calories a day is used for general nutrition advice.



MCC Code	190-0106
Pack	6/3#
Unit UPC	0-52525-40415-3
Pack UPC	1-00-52525-40415-0
Pack	6
Item weight	3#
Case Gross WT	19.5#
Shelf Life	730 days (2 years)

<u>Case Dimensions</u>	
Length	14.5
Width	11.5
Height	8.5
Cube	0.82
Ti	11
Hi	4
Pallet	44

Ingredients: Mango,  
Blueberries and  
Sliced Strawberries  
Product of Chile





# CAMPOVERDE SUNRISE DELIGHT 6/3 lb.



Nutrition Facts	
About 6 servings per container	
<b>Serving size</b>	<b>1 cup (227g)</b>
<b>Amount per serving</b>	
<b>Calories</b>	<b>100</b>
<b>% Daily Value*</b>	
<b>Total Fat</b> 0.5g	<b>1%</b>
<b>Saturated Fat</b> 0g	<b>0%</b>
<b>Trans Fat</b> 0g	
<b>Cholesterol</b> 0mg	<b>0%</b>
<b>Sodium</b> 0mg	<b>0%</b>
<b>Total Carbohydrate</b> 24g	<b>9%</b>
Dietary Fiber 4g	<b>14%</b>
Total Sugars 19g	
Includes 0g Added Sugars	<b>0%</b>
<b>Protein</b> 2g	
Vitamin D 0mcg	<b>0%</b>
Calcium 26mg	<b>2%</b>
Iron 1mg	<b>5%</b>
Potassium 383mg	<b>8%</b>
Vitamin C 83mg	<b>90%</b>
Niacin 2mg	<b>10%</b>
Vitamin E 1mg	<b>10%</b>
Molybdenum 12mcg	<b>25%</b>

\* The % Daily Value (DV) tells you how much a nutrient in a serving of food contributes to a daily diet. 2,000 calories a day is used for general nutrition advice.

Ingredients: Sliced Strawberries, Peaches and Mango

Product of Chile



MCC Code	190-0107
Pack	6/3#
Unit UPC	0-52525-40416-0
Pack UPC	1-00-52525-40416-7
Pack	6
Item weight	3#
Case Gross WT	19.5#
Shelf Life	730 days (2 years)

Case Dimensions	
Length	14.5
Width	11.5
Height	8.5
Cube	0.82
Ti	11
Hi	4
Pallet	44

# CAMPOVERDE BANANA MANIA 6/3 lb.



Nutrition Facts	
Serving Size 2/3 Cup (140g)	
Servings per Container Approx. 10	
Amount Per Serving	
<b>Calories</b> 106	Calories from Fat 0
<b>% Daily Value*</b>	
<b>Total Fat</b> 0g	<b>0%</b>
<b>Saturated Fat</b> 0g	<b>0%</b>
<b>Trans Fat</b> 0g	
<b>Cholesterol</b> 0mg	<b>0%</b>
<b>Sodium</b> 0mg	<b>0%</b>
<b>Total Carbohydrate</b> 21g	<b>7%</b>
Dietary Fiber 2g	<b>10%</b>
Sugars 18g	
<b>Protein</b> 1g	
<b>Vitamin A</b> 18%	<b>Vitamin C</b> 55%
<b>Calcium</b> 1%	<b>Iron</b> 2%
* Percent Daily Values are based on a 2,000 calorie diet. Your daily values may be higher or lower depending on your calorie needs:	
	Calories: 2,000 2,500
Total Fat	Less than 65g 80g
Saturated Fat	Less than 20g 25g
Cholesterol	Less than 300mg 300mg
Sodium	Less than 2,400mg 2,400mg
Total Carbohydrate	300g 375g
Dietary Fiber	25g 30g
Calories per gram: Fat 9 • Carbohydrate 4 • Protein 4	

Ingredients: Whole Strawberries and Banana

Product of Chile



MCC Code	190-0032
Pack	6/3#
Unit UPC	0-52525-40269-2
Pack UPC	1-00-52525-40269-9
Pack	6
Item weight	3#
Case Gross WT	19.5#
Shelf Life	730 days (2 years)

Case Dimensions	
Length	15.5
Width	11
Height	10
Cube	1.05
Ti	10
Hi	3
Pallet	30





# CAMPOVERDE MAGIC SENSATION 6/3 lb.



Nutrition Facts	
Serving Size 2/3 Cup (140g)	
Servings per Container Approx. 10	
Amount Per Serving	
<b>Calories</b> 106	Calories from Fat 0
<b>% Daily Value*</b>	
<b>Total Fat</b> 0g	<b>0%</b>
<b>Saturated Fat</b> 0g	<b>0%</b>
<b>Trans Fat</b> 0g	
<b>Cholesterol</b> 0mg	<b>0%</b>
<b>Sodium</b> 0mg	<b>0%</b>
<b>Total Carbohydrate</b> 21g	<b>7%</b>
<b>Dietary Fiber</b> 2g	<b>10%</b>
<b>Sugars</b> 18g	
Protein 1g	
<b>Vitamin A</b> 18%	<b>Vitamin C</b> 55%
<b>Calcium</b> 1%	<b>Iron</b> 2%
* Percent Daily Values are based on a 2,000 calorie diet. Your daily values may be higher or lower depending on your calorie needs:	
	Calories: 2,000 2,500
<b>Total Fat</b>	Less than 65g 80g
<b>Saturated Fat</b>	Less than 20g 25g
<b>Cholesterol</b>	Less than 300mg 300mg
<b>Sodium</b>	Less than 2,400mg 2,400mg
<b>Total Carbohydrate</b>	300g 375g
<b>Dietary Fiber</b>	25g 30g
Calories per gram: Fat 9 • Carbohydrate 4 • Protein 4	

Ingredients:  
Pineapple Chunks,  
Mango, Banana and  
Strawberries

Product of Chile



MCC Code	190-0033
Pack	6/3#
Unit UPC	0-52525-40270-8
Pack UPC	1-00-52525-40270-5
Pack	6
Item weight	3#
Case Gross WT	19.5#
Shelf Life	730 days (2 years)

Case Dimensions	
Length	15.5
Width	11
Height	10
Cube	1.05
Ti	10
Hi	3
Pallet	30



# CAMPOVERDE FRUIT & VEGGIE BLENDERS ACAI ENERGIZING POWER 6/2 lb.



## Nutrition Facts

4 servings per container  
**Serving size** 1 cup (227g)  
 1 fruit and veggie pouch +  
 1 açaí pouch

**Amount per serving**  
**Calories** 150

		% Daily Value*
<b>Total Fat</b>	4.5g	6%
Saturated Fat	1g	5%
Trans Fat	0g	
<b>Cholesterol</b>	0mg	0%
<b>Sodium</b>	25mg	1%
<b>Total Carbohydrate</b>	26g	9%
Dietary Fiber	8g	21%
Total Sugars	17g	
Includes 7g Added Sugars		14%

Protein 3g		
Vitamin D	0mcg	0%
Calcium	79mg	6%
Iron	1mg	6%
Potassium	419mg	8%
Vitamin A	229mcg	25%
Vitamin C	86mg	100%
Vitamin K	328mcg	270%
Copper	1mg	80%
Manganese	1mg	25%
Molybdenum	8mcg	15%

\* The % Daily Value (DV) tells you how much a nutrient in a serving of food contributes to a daily diet. 2,000 calories a day is used for general nutrition advice.

Ingredients: Açaí,  
Kale, Strawberries,  
Apple and  
Blueberries

Product of Chile



MCC Code	190-0118
Pack	6/4/8oz (2#)
Unit UPC	0-52525-40427-6
Pack UPC	1-00-52525-40427-3
Pack	6
Item weight	2#
Case Gross WT	13.5#
Shelf Life	730 days (2 years)

Case Dimensions	
Length	15.5
Width	10
Height	8.3
Cube	0.74
Ti	12
Hi	4
Pallet	48





# CAMPOVERDE FRUIT & VEGGIE BLENDERS ENERGY BOOST 6/2 lb.



## Nutrition Facts

4 servings per container  
Serving size 1 cup (227g)

Amount per serving  
**Calories 130**

	% Daily Value*
<b>Total Fat</b> 0.5g	1%
Saturated Fat 0g	0%
Trans Fat 0g	
<b>Cholesterol</b> 0mg	0%
<b>Sodium</b> 35mg	2%
<b>Total Carbohydrate</b> 32g	12%
Dietary Fiber 4g	14%
Total Sugars 22g	
Includes 0g Added Sugars	0%

### Protein 3g

Vitamin D 0mcg	0%
Calcium 92mg	8%
Iron 2mg	10%
Potassium 562mg	10%
Vitamin A 261mcg	30%
Vitamin C 26mg	30%
Vitamin K 232mcg	190%
Magnesium 61mg	15%
Manganese 1mg	25%
Molybdenum 12mcg	25%
Biotin 6mcg	20%

\* The % Daily Value (DV) tells you how much a nutrient in a serving of food contributes to a daily diet. 2,000 calories a day is used for general nutrition advice.

Ingredients:  
Mandarin Oranges,  
Spinach, Apple,  
Grape and Banana

Product of Chile



MCC Code	190-0113
Pack	6/4/8oz (2#)
Unit UPC	0-52525-40422-1
Pack UPC	1-00-52525-40422-8
Pack	6
Item weight	2#
Case Gross WT	13.5#
Shelf Life	730 days (2 years)

Case Dimensions	
Length	15.5
Width	10
Height	8.3
Cube	0.74
Ti	12
Hi	4
Pallet	48



100%  
NATURAL  
PRODUCT

Easy  
Healthy  
Smoothie

# CAMPOVERDE FRUIT & VEGGIE BLENDERS FIT & WELLNESS 6/2 lb.



## Nutrition Facts

4 servings per container  
**Serving size 1 cup (227g)**

**Amount per serving**  
**Calories 100**

**% Daily Value\***

<b>Total Fat</b> 0.5g	<b>1%</b>
Saturated Fat 0g	<b>5%</b>
Trans Fat 0g	
<b>Cholesterol</b> 0mg	<b>0%</b>
<b>Sodium</b> 15mg	<b>1%</b>
<b>Total Carbohydrate</b> 26g	<b>9%</b>
Dietary Fiber 3g	<b>11%</b>
Total Sugars 19g	
Includes 0g Added Sugars	<b>0%</b>
<b>Protein</b> 2g	
Vitamin D 0mcg	<b>0%</b>
Calcium 79mg	<b>6%</b>
Iron 1mg	<b>6%</b>
Potassium 507mg	<b>10%</b>
Vitamin A 261mcg	<b>30%</b>
Vitamin C 108mg	<b>120%</b>
Magnesium 52mg	<b>10%</b>
Manganese 1mg	<b>45%</b>

\* The % Daily Value (DV) tells you how much a nutrient in a serving of food contributes to a daily diet. 2,000 calories a day is used for general nutrition advice.

Ingredients: Spinach,  
Mango, Apple and  
Pineapple

Product of Chile



MCC Code	190-0115
Pack	6/4/8oz (2#)
Unit UPC	0-52525-40424-5
Pack UPC	1-00-52525-40424-2
Pack	6
Item weight	2#
Case Gross WT	13.5#
Shelf Life	730 days (2 years)

<u>Case Dimensions</u>	
Length	15.5
Width	10
Height	8.3
Cube	0.74
Ti	12
Hi	4
Pallet	48





# CAMPOVERDE FRUIT & VEGGIE BLENDERS FOREVER YOUNG 6/2 lb.



## Nutrition Facts

4 servings per container  
Serving size **1 cup (227g)**

Amount per serving  
**Calories 130**

	% Daily Value*
<b>Total Fat</b> 0.5g	<b>1%</b>
Saturated Fat 0g	<b>0%</b>
Trans Fat 0g	
<b>Cholesterol</b> 0mg	<b>0%</b>
<b>Sodium</b> 50mg	<b>2%</b>
<b>Total Carbohydrate</b> 34g	<b>12%</b>
Dietary Fiber 6g	<b>21%</b>
Total Sugars 21g	
Includes 0g Added Sugars	<b>0%</b>

**Protein** 2g

Vitamin D 0mcg	0%
Calcium 45mg	4%
Iron 1mg	4%
Potassium 540mg	10%
Vitamin A 587mcg	70%
Vitamin C 27mg	30%
Vitamin K 20mcg	15%
Manganese 0mg	20%
Molybdenum 6mcg	15%
Biotin 4mcg	15%

\* The % Daily Value (DV) tells you how much a nutrient in a serving of food contributes to a daily diet. 2,000 calories a day is used for general nutrition advice.

Ingredients: Carrot,  
Blueberries, Banana  
and Mandarin  
Oranges

Product of Chile



MCC Code	190-0114
Pack	6/4/8oz (2#)
Unit UPC	0-52525-40423-8
Pack UPC	1-00-52525-40423-5
Pack	6
Item weight	2#
Case Gross WT	13.5#
Shelf Life	730 days (2 years)

Case Dimensions	
Length	15.5
Width	10
Height	8.3
Cube	0.74
Ti	12
Hi	4
Pallet	48



# CAMPOVERDE FRUIT & VEGGIE BLENDERS CHIA FIBER SUPREMACY 6/2 lb.



## Nutrition Facts

4 servings per container  
**Serving size** 1 1/2 cup (341g)  
**1 fruit/veggie pouch + 1 chia seed pouch**

Amount per serving		% Daily Value*
<b>Calories</b>	<b>180</b>	
<b>Total Fat</b> 6g		8%
Saturated Fat .05g		3%
Trans Fat 0g		
<b>Cholesterol</b> 0mg		0%
<b>Sodium</b> 35mg		2%
<b>Total Carbohydrate</b> 32g		12%
Dietary Fiber 10g		36%
Total Sugars 16g		
Includes 0g Added Sugars		0%
<b>Protein</b> 5g		
Vitamin D 0mcg		0%
Calcium 171mg		15%
Iron 2mg		15%
Potassium 516mg		10%
Vitamin A 152mg		15%
Vitamin C 86mcg		100%
Vitamin K 210mcg		180%
Phosphorus 193mg		15%
Magnesium 90mg		20%
Selenium 10mcg		15%
Copper 1mg		80%
Manganese 2mg		70%

\* The % Daily Value (DV) tells you how much a nutrient in a serving of food contributes to a daily diet. 2,000 calories a day is used for general nutrition advice.

## Ingredients:

Pineapple, Banana, Apple, Kale, Celery Chia Seeds and Lemongrass

Product of Chile



MCC Code	190-0120
Pack	6/4/8oz (2#)
Unit UPC	0-52525-40429-0
Pack UPC	1-00-52525-40429-7
Pack	6
Item weight	2#
Case Gross WT	13.5#
Shelf Life	730 days (2 years)

Case Dimensions	
Length	15.5
Width	10
Height	8.3
Cube	0.74
Ti	12
Hi	4
Pallet	48





# CAMPOVERDE FRUIT & VEGGIE BLENDERS HEALTHY LIFE 6/2 lb.



## Nutrition Facts

4 servings per container  
**Serving size 1 cup (227g)**  
**1 fruit/veggie pouch**  
**1 avocado chunks pouch**

**Amount per serving**  
**Calories 190**  
 % Daily Value\*

<b>Total Fat</b> 10g	<b>13%</b>
Saturated Fat 1.5g	<b>8%</b>
Trans Fat 0g	
<b>Cholesterol</b> 0mg	<b>0%</b>
<b>Sodium</b> 35mg	<b>2%</b>
<b>Total Carbohydrate</b> 25g	<b>9%</b>
Dietary Fiber 8g	<b>29%</b>
Total Sugars 14g	
Includes 0g Added Sugars	<b>0%</b>

<b>Protein</b> 2g	
Vitamin D 0mcg	<b>0%</b>
Calcium 33mg	<b>2%</b>
Iron 1mg	<b>4%</b>
Potassium 597mg	<b>15%</b>
Vitamin A 387mcg	<b>45%</b>
Vitamin C 34mg	<b>40%</b>
Vitamin K 22mcg	<b>20%</b>
Manganese 1mg	<b>20%</b>

\* The % Daily Value (DV) tells you how much a nutrient in a serving of food contributes to a daily diet. 2,000 calories a day is used for general nutrition advice.

Ingredients: Apple, Avocado, Carrot and Pineapple

Product of Chile



MCC Code	190-0112
Pack	6/4/8oz (2#)
Unit UPC	0-52525-40421-4
Pack UPC	1-00-52525-40421-1
Pack	6
Item weight	2#
Case Gross WT	13.5#
Shelf Life	730 days (2 years)

<u>Case Dimensions</u>	
Length	15.5
Width	10
Height	8.3
Cube	0.74
Ti	12
Hi	4
Pallet	48



# CAMPOVERDE FRUIT & VEGGIE BLENDERS ACAI VITALITY SPLASH 6/2 lb.



## Nutrition Facts

4 servings per container  
**Serving size 1 cup (227g)**  
**1 fruit and veggie pouch + 1 açaí pouch**

Amount per serving		
<b>Calories</b>	<b>160</b>	
		<b>% Daily Value*</b>
<b>Total Fat</b> 4.5g		<b>6%</b>
Saturated Fat 1g		<b>5%</b>
Trans Fat 0g		
<b>Cholesterol</b> 0mg		<b>0%</b>
<b>Sodium</b> 45mg		<b>2%</b>
<b>Total Carbohydrate</b> 29g		<b>11%</b>
Dietary Fiber 5g		<b>18%</b>
Total Sugars 20g		
Includes 7g Added Sugars		<b>14%</b>
<b>Protein</b> 2g		
Vitamin D 0mcg		<b>0%</b>
Calcium 30mg		<b>2%</b>
Iron 0mg		<b>0%</b>
Potassium 419mg		<b>8%</b>
Vitamin E 39mg		<b>45%</b>
Vitamin K 14mcg		<b>10%</b>
Manganese 1mg		<b>35%</b>

\* The % Daily Value (DV) tells you how much a nutrient in a serving of food contributes to a daily diet. 2,000 calories a day is used for general nutrition advice.

Ingredients:  
 Pineapple, Açaí,  
 Banana and Celery  
 Product of Chile



MCC Code	190-0117
Pack	6/4/8oz (2#)
Unit UPC	0-52525-40426-9
Pack UPC	1-00-52525-40426-6
Pack	6
Item weight	2#
Case Gross WT	13.5#
Shelf Life	730 days (2 years)

Case Dimensions	
Length	15.5
Width	10
Height	8.3
Cube	0.74
Ti	12
Hi	4
Pallet	48





# CAMPOVERDE FRUIT & VEGGIE BLENDERS QUINOA PROTEIN STRENGTH 6/2 lb.



## Nutrition Facts

4 servings per container  
**Serving size** 1 cup (227g)  
 1 fruit pouch+  
 1 quinoa grain pouch

**Amount per serving**  
**Calories** 170

		% Daily Value*
<b>Total Fat</b>	1.5g	2%
Saturated Fat	0g	0%
Trans Fat	0g	
<b>Cholesterol</b>	0mg	0%
<b>Sodium</b>	50mg	2%
<b>Total Carbohydrate</b>	40g	15%
Dietary Fiber	5g	18%
Total Sugars	22g	
Includes 0g Added Sugars		0%

Protein 3g		
Vitamin D	0mcg	0%
Calcium	26mg	0%
Iron	1mg	6%
Potassium	450mg	10%
Vitamin C	58mg	60%
Magnesium	58mg	15%
Manganese	1mg	50%

\* The % Daily Value (DV) tells you how much a nutrient in a serving of food contributes to a daily diet. 2,000 calories a day is used for general nutrition advice.

Ingredients:  
 Pineapple, Banana,  
 Mango and Cooked  
 Quinoa

Product of Chile



MCC Code	190-0116
Pack	6/4/8oz (2#)
Unit UPC	0-52525-40425-2
Pack UPC	1-00-52525-40425-9
Pack	6
Item weight	2#
Case Gross WT	13.5#
Shelf Life	730 days (2 years)

Case Dimensions	
Length	15.5
Width	10
Height	8.3
Cube	0.74
Ti	12
Hi	4
Pallet	48

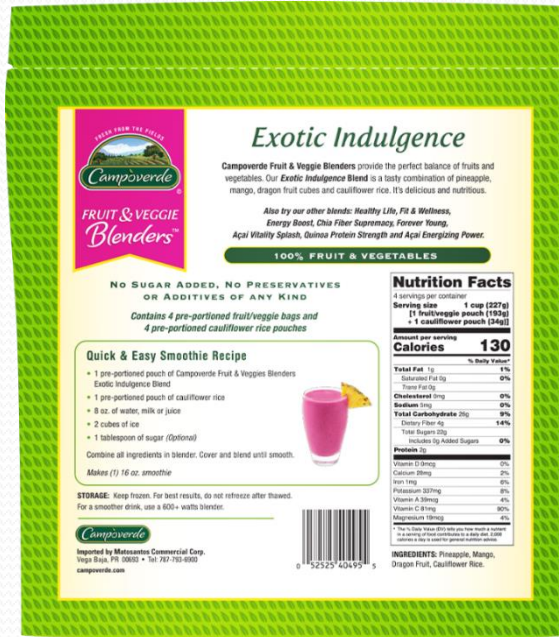
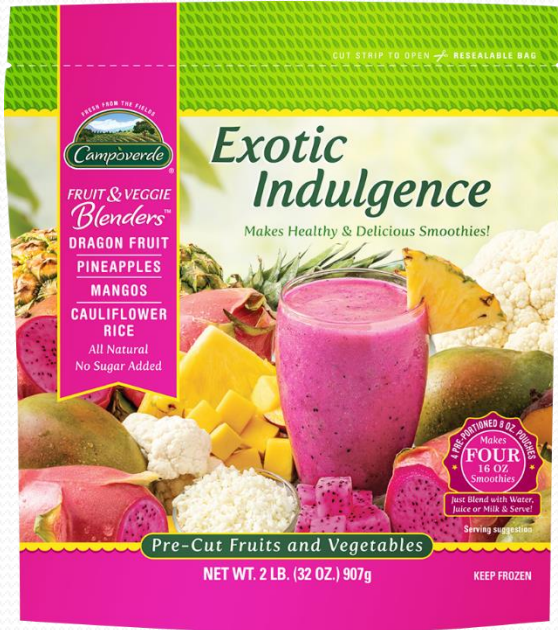


100%  
 NATURAL  
 PRODUCT





# CAMCOVERDE FRUIT & VEGGIE BLENDERS EXOTIC INDULGENCE 6/2 lb.

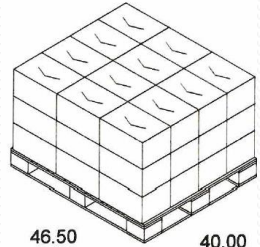
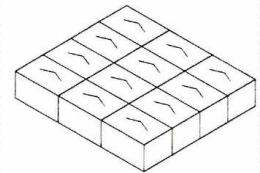


**Nutrition Facts**  
4 servings per container  
**Serving size 1 cup (227g)**  
[1 fruit/veggie pouch (193g)  
+ 1 cauliflower pouch (34g)]

Amount per serving	<b>130</b>	% Daily Value*
<b>Calories</b>	<b>130</b>	
<b>Total Fat</b> 1g		<b>1%</b>
Saturated Fat 0g		<b>0%</b>
Trans Fat 0g		
<b>Cholesterol</b> 0mg		<b>0%</b>
<b>Sodium</b> 5mg		<b>0%</b>
<b>Total Carbohydrate</b> 26g		<b>9%</b>
Dietary Fiber 4g		<b>14%</b>
Total Sugars 22g		
Includes 0g Added Sugars		<b>0%</b>
<b>Protein</b> 2g		
Vitamin D 0mcg		<b>0%</b>
Calcium 28mg		<b>2%</b>
Iron 1mg		<b>6%</b>
Potassium 337mg		<b>8%</b>
Vitamin A 39mcg		<b>4%</b>
Vitamin C 81mg		<b>90%</b>
Magnesium 19mcg		<b>4%</b>

\* The % Daily Value (DV) tells you how much a nutrient in a serving of food contributes to a daily diet. 2,000 calories a day is used for general nutrition advice.

## Pallet Configuration



38.80

46.50

40.00

MCC Code	190-0119
Pack	6/4/8oz (2#)
Unit UPC	0 52525 40495 5
Pack UPC	1 00 52525 40495 2
Pack	6
Item weight	2#
Case Gross WT	13.5#
Shelf Life	730 days (2 years)

Case Dimensions	
Length	15.5
Width	10
Height	8.3
Cube	0.74
Ti	12
Hi	4
Pallet	48

Ingredients:  
Pineapple, Mango,  
Dragon Fruit,  
Cauliflower Rice

Product of Chile

## Pack UPC Code



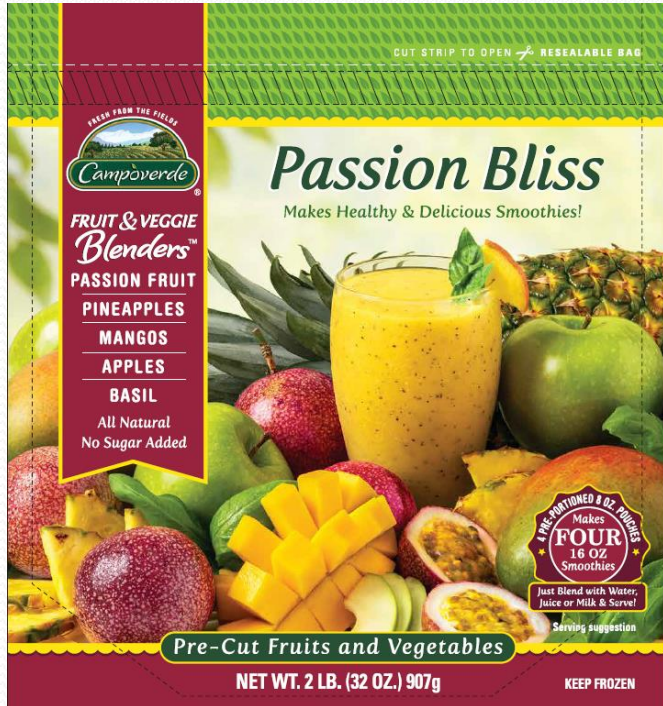
## Case UPC Code



1 00 52525 40495 2



# CAMPOVERDE FRUIT & VEGGIE BLENDERS PASSION BLISS 6/2 lb.



## Nutrition Facts

4 servings per container  
**Serving size 1 cup (227g)**  
**[1 fruit/veggie pouch]**

Amount per serving		% Daily Value*
<b>Calories 150</b>		
<b>Total Fat</b> 1g		<b>1%</b>
Saturated Fat 0g		<b>0%</b>
Trans Fat 0g		
<b>Cholesterol</b> 0mg		<b>0%</b>
<b>Sodium</b> 20mg		<b>1%</b>
<b>Total Carbohydrate</b> 35g		<b>13%</b>
Dietary Fiber 9g		<b>32%</b>
Total Sugars 25g		
Includes 0g Added Sugars		<b>0%</b>
<b>Protein</b> 2g		
Vitamin D 0mcg		0%
Calcium 30mg		2%
Iron 1.4mg		8%
Potassium 420mg		8%
Vitamin C 77mg		90%
Vitamin K 11mcg		10%
Chromium 0.004mg		10%

\* The % Daily Value (DV) tells you how much a nutrient in a serving of food contributes to a daily diet. 2,000 calories a day is used for general nutrition advice.

**Ingredients: Passion Fruit, Pineapples, Mangos, Apples, Basil**

Product of Chile



MCC Code	190-0134
Pack	6/4/8oz (2#)
Unit UPC	0 52525 40498 6
Pack UPC	1 00 52525 40498 3
Pack	6
Item weight	2#
Case Gross WT	13.5#
Shelf Life	730 days (2 years)

<b>Case Dimensions</b>	
Length	15.5
Width	10
Height	8.3
Cube	0.74
Ti	12
Hi	4
Pallet	48

# CAMPOVERDE

## ACAÍ PUREE PACKS 6/3.5oz (1.31#)



### Nutrition Facts

6 servings per container  
Serving size 1 bag, 3.5 oz (100g)

Amount per serving  
**Calories 110**

% Daily Value\*

**Total Fat** 6g **8%**

Saturated Fat 1.5g **8%**

Trans Fat 0g

**Cholesterol** 0mg **0%**

**Sodium** 10mg **0%**

**Total Carbohydrate** 13g **5%**

Dietary Fiber 3g **11%**

Total Sugars 10g

Includes 10g Added Sugars **20%**

**Protein** 1g

Vitamin D 0mcg **0%**

Calcium 15mg **2%**

Iron 0mg **0%**

Potassium 80mg **2%**

Omega-3 fatty acids 50mg\*\* +

Omega-6 fatty acids 670mg\*\* +

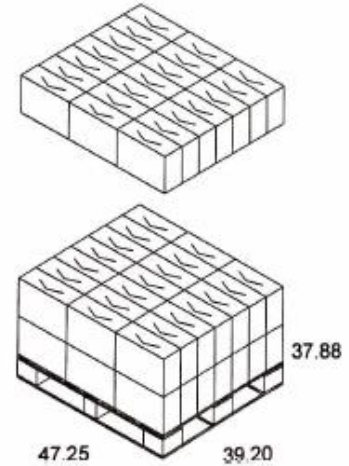
Omega-9 fatty acids 2900mg\*\* +

\* The % Daily Value (DV) tells you how much a nutrient in a serving of food contributes to a daily diet. 2,000 calories a day is used for general nutrition advice.

\*\* Amount in 100g of Açai.

+ Daily Value not established.

### Pallet Configuration



### Pack UPC Code



### Case UPC Code



MCC Code 190-0099

Pack 8/6/3.5oz (10.5#)

Unit UPC 0-52525-40510-5

Pack UPC 1-00-52525-40510-2

Packs per Case 8

Pack Weight 21oz (1.31#)

Case Gross WT 12#

Shelf Life 730 days (2 years)

### Case Dimensions

Length 15.75"

Width 5.6"

Height 10.5"

Cube 0.536

Ti 21

Hi 3

Pallet 63

Ingredients: Açai,  
Filtered Water, Sugar,  
Guaraná Extract  
Powder, Citric Acid.

Product of Brazil



# CAMPOVERDE

## AMARILLOS (FRIED RIPE PLANTAINS) 24/12oz.



MCC Code	190-0046
Pack	24/12oz.
Unit UPC	0-52525-40287-6
Pack UPC	1-00-52525-40287-3
Pack	24
Item weight	12oz.
Case Gross WT	19.5#
Shelf Life	730 days (2 years)

<u>Case Dimensions</u>	
Length	15.5
Width	11.5
Height	8.5
Cube	0.7
Ti	10
Hi	4
Pallet	40





# CAMPOVERDE AMARILLOS (FRIED RIPE PLANTAINS) 14/2#



MCC Code	190-0047
Pack	14/2#
Unit UPC	0-52525-40288-3
Pack UPC	1-00-52525-40288-0
Pack	14
Item weight	2#
Case Gross WT	30#
Shelf Life	730 days (2 years)

<u>Case Dimensions</u>	
Length	15.5
Width	11.5
Height	10
Cube	0.85
Ti	10
Hi	4
Pallet	40





# CAMPOVERDE TOSTONES (FRIED GREEN PLANTAINS) 24/12oz.



MCC Code	190-0048
Pack	24/12oz.
Unit UPC	0-52525-40285-2
Pack UPC	1-00-52525-40285-9
Pack	24
Item weight	12oz.
Case Gross WT	19.5#
Shelf Life	730 days (2 years)

<u>Case Dimensions</u>	
Length	15.5
Width	11.5
Height	8.5
Cube	0.85
Ti	10
Hi	4
Pallet	40



# CAMPOVERDE TOSTONES (FRIED GREEN PLANTAINS) 14/2#



MCC Code	190-0049
Pack	14/2#
Unit UPC	0-52525-40286-9
Pack UPC	1-00-52525-40286-6
Pack	14
Item weight	2#
Case Gross WT	30#
Shelf Life	730 days (2 years)

Case Dimensions	
Length	15.5
Width	11.5
Height	11.5
Cube	1.18
Ti	10
Hi	4
Pallet	40







**Gracias!**

**Contactar:**

CrossLidia@CrossIntlBrokerage.com  
Roberto@CrossIntlBrokerage.com DF  
Kam-DF@CrossIntlBrokerage.com DF  
Gloria@CrossIntlBrokerage.com MTY